



IRF-1 Polyclonal Antibody

Catalog No	YP-Ab-02252
Isotype	IgG
Reactivity	Human;Mouse;Rat
Applications	WB;ELISA;IHC
Gene Name	IRF1
Protein Name	Interferon regulatory factor 1
Immunogen	The antiserum was produced against synthesized peptide derived from the Internal region of human IRF1. AA range:91-140
Specificity	IRF-1 Polyclonal Antibody detects endogenous levels of IRF-1 protein.
Formulation	Liquid in PBS containing 50% glycerol, 0.5% BSA and 0.02% sodium azide.
Source	Polyclonal, Rabbit,IgG
Purification	The antibody was affinity-purified from rabbit antiserum by affinity-chromatography using epitope-specific immunogen.
Dilution	WB 1:500-2000;IHC-p 1:50-300; ELISA 2000-20000
Concentration	1 mg/ml
Purity	≥90%
Storage Stability	-20°C/1 year
Synonyms	IRF1; Interferon regulatory factor 1; IRF-1
Observed Band	36kD
Cell Pathway	Nucleus . Cytoplasm . MYD88-associated IRF1 migrates into the nucleus more efficiently than non-MYD88-associated IRF1. .
Tissue Specificity	Pancreas,Placenta,Spleen,
Function	disease:Deletion or rearrangement of IRF1 are a cause of preleukemic myelodysplastic syndrome (MDS) and of acute myelogenous leukemia (AML).,function:Specifically binds to the upstream regulatory region of type I IFN and IFN-inducible MHC class I genes (the interferon consensus sequence (ICS)) and activates those genes. Acts as a tumor suppressor.,induction:By viruses and IFN.,PTM:Sumoylation represses the transcriptional activity and displays enhanced resistance to protein degradation. Inactivates the tumor suppressor activity. Elevated levels in tumor cells. Major site is Lys-275. Sumoylation is enhanced by PIAS3 (By similarity). Desumoylated by SENP1 in tumor cells and appears to compete with ubiquitination on C-terminal sites.,PTM:Ubiquitinated. Appears to compete with sumoylation on C-terminal sites.,similarity:Belongs to the IRF family.,similarity:Contains 1 tryptophan pentad repea
Background	IRF1 encodes interferon regulatory factor 1, a member of the interferon regulatory transcription factor (IRF) family. IRF1 serves as an activator of



interferons alpha and beta transcription, and in mouse it has been shown to be required for double-stranded RNA induction of these genes. IRF1 also functions as a transcription activator of genes induced by interferons alpha, beta, and gamma. Further, IRF1 has been shown to play roles in regulating apoptosis and tumor-suppressoion. [provided by RefSeq, Jul 2008],

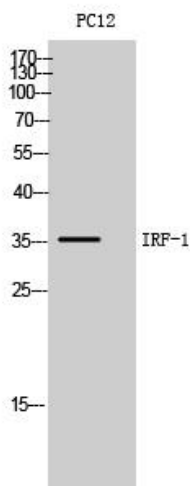
matters needing attention

Avoid repeated freezing and thawing!

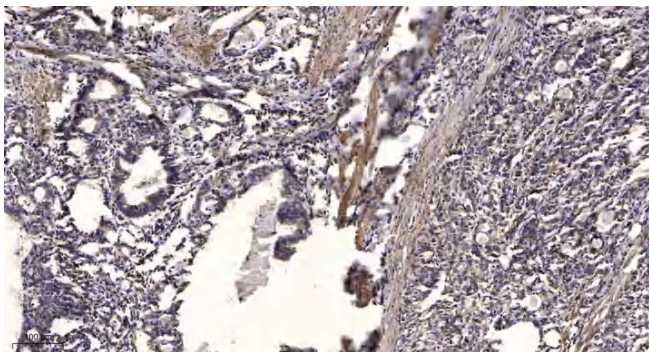
Usage suggestions

This product can be used in immunological reaction related experiments. For more information, please consult technical personnel.

Products Images



Western Blot analysis of PC12 cells using IRF-1 Polyclonal Antibody. Secondary antibody(catalog#:RS0002) was diluted at 1:20000 cells nucleus extracted by Minute TM Cytoplasmic and Nuclear Fractionation kit (SC-003, Inventbiotech, MN, USA).



Immunohistochemical analysis of paraffin-embedded human Gastric adenocarcinoma. 1, Antibody was diluted at 1:200(4° overnight). 2, Tris-EDTA, pH9.0 was used for antigen retrieval. 3, Secondary antibody was diluted at 1:200(room temperature, 45min).